

# MONTHLY MEMBERSHIP PROGRESS REPORT

District 4 A2

Results as of: 3/31/2024

GMT:

LOCATION CALIFORNIA

GMT CA

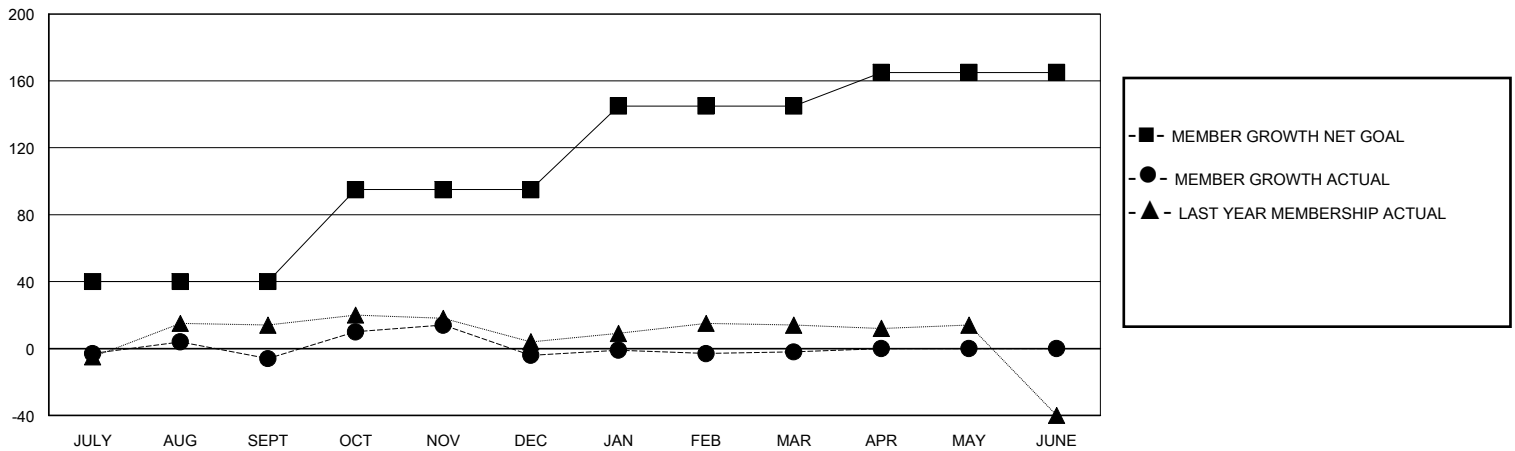
| Clubs                 |               |           |               |
|-----------------------|---------------|-----------|---------------|
| RESULTS FOR 2023-2024 |               |           |               |
| QUARTER               | NEW CLUB GOAL | NEW CLUBS | DROPPED CLUBS |
| JULY/AUG/SEPT         | 0             | 0         | 0             |
| OCT/NOV/DEC           | 0             | 0         | 1             |
| JAN/FEB/MAR           | 1             | 0         | 0             |
| APR/MAY/JUNE          | 0             | 0         | 0             |

| Members               |                        |                      |  |
|-----------------------|------------------------|----------------------|--|
| RESULTS FOR 2023-2024 |                        |                      |  |
| QUARTER               | MEMBER GROWTH NET GOAL | MEMBER GROWTH ACTUAL | DROPPED MEMBERS ACTUAL (including transfers) |
| JULY/AUG/SEPT         | 40                     | 49                   | 46   |
| OCT/NOV/DEC           | 55                     | 53                   | 45   |
| JAN/FEB/MAR           | 50                     | 36                   | 29   |
| APR/MAY/JUNE          | 20                     | 0                    | 0  |

GOALS AND ACTUAL NEW CLUBS CUMULATIVE



GOALS AND ACTUAL MEMBERS CUMULATIVE



DROPPED CLUBS: 1

25 CLUBS OF 63 ADDED 1 OR MORE NEW MEMBERS

GENDER DISTRIBUTION

MALE 1,197 (69.19%)  
FEMALE 530 (30.64%)

DROPPED MEMBERS

|                |            |
|----------------|------------|
| DECEASED       | 14         |
| CLUB CANCELLED | 1          |
| OTHER          | 106        |
| <b>TOTAL</b>   | <b>121</b> |

[CLICK HERE FOR CUMULATIVE MEMBERSHIP DATA](#)

|                                 |     |
|---------------------------------|-----|
| TOTAL FAMILY UNIT MEMBERS       | 277 |
| FAMILY MEMBERS PAYING HALF DUES | 148 |